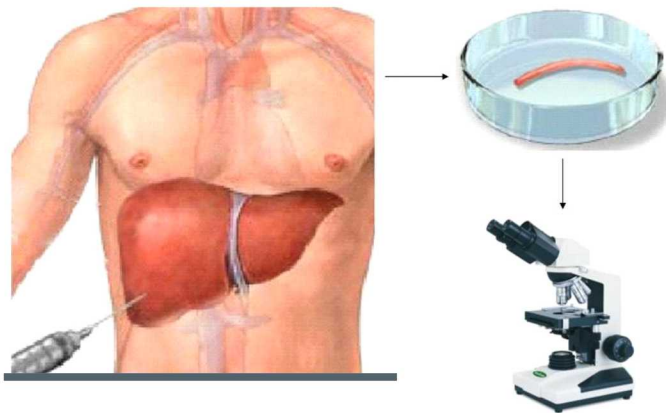


What is Liver Biopsy

Liver Biopsy is a diagnostic procedure in which a sample of the liver tissue is removed using a hollow needle and is then examined under a microscope to check for damage or disease in the liver



Why is a Liver Biopsy done?

If initial diagnosis has some indications of Liver Abnormalities, then the doctor may ask for a Liver biopsy for the following reasons

- To evaluate the cause and degree of damage in the liver
- To determine any underlying diseases that cannot be diagnosed by blood or imaging tests
- To decide on best treatment

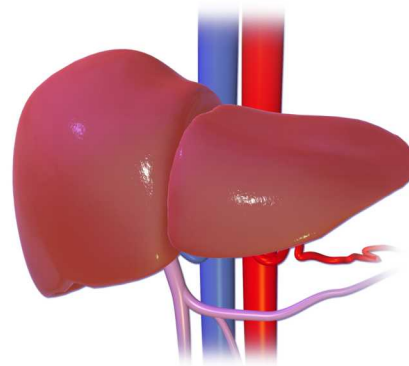
Preparation for the procedure

In preparation for the procedure, you will need

- a blood test to check your blood's ability to clot
- Not eat anything for 6-8 hours prior the procedure
- Stop any blood thinning medications like clopilet, warfarin etc. The doctor will advise on when you will need to do this.

What happens during the Liver Biopsy?

The Biopsy is done by a specialist doctor called the Interventional Radiologist. You will be asked to lie on your back on the table and with the aid of Ultrasound device, a suitable area in the liver for biopsy is located. The area is then cleaned with disinfectant and is draped with sterile towels. A local anaesthetic will be injected to numb the skin and the deeper layers. The radiologist will then ask you to take few deep breaths and then hold your breath. As you do this, the biopsy needle will be inserted through the numb skin and liver tissue samples are drawn. This sample is then sent to the laboratory for analysis under a microscope. The procedure may last up to an hour.



What happens afterwards?

Once the procedure is completed, you will be taken into day care. You will be advised to lie on the side the biopsy was performed, so that your weight presses on the wound. This will provide compression of the biopsied site. You will need to rest for a few hours before you can go home.

You will be informed on when you will get the results, after which you will need to make an appointment to meet the doctor who referred you for the procedure. It is advisable to avoid strenuous activity or weight lifting for a week after the biopsy.

Risks

Liver Biopsy is a safe procedure with complications being very rare. Some of these rare risks include

- Bleeding from the incision site or internal bleeding
- Bruising or swelling around the incision site
- Pneumothorax, this is when a small hole is made accidentally in the lining of the lung, which is in close proximity to the liver, when air escapes to the pleural space. This may cause breathlessness but usually does not require any treatment as the air is gradually absorbed by the lung lining.

Finally....

This booklet aims to outline any expectations that you may have going forward with the procedure however, it is best to discuss any questions or concerns with your doctor